

A Data-driven Approach to Revamp the Accountable Care Organizations (ACO) Risk Adjustment Model

Yubin Park*, Kevin Buchan, Jason Piccone, Brandon Sim

Department of Medicine, Apollo Medical Holdings, Alhambra, California, United States of America

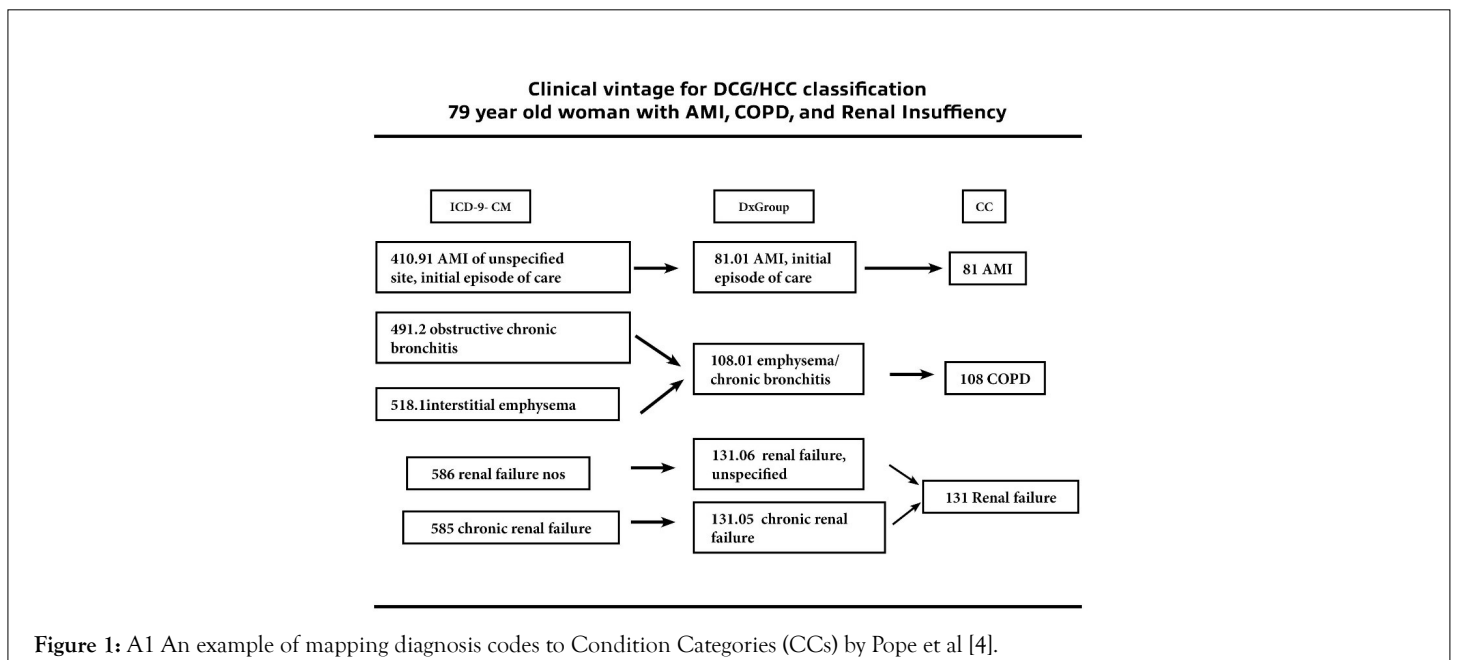


Figure 1: A1 An example of mapping diagnosis codes to Condition Categories (CCs) by Pope et al [4].

Table 1: Predictive Performance of Various RA Models with 2 year window Chronic HCCs.

| Model | R ² | CPM | MAPE | PR |
|--------------|----------------|-------|-------|-------|
| lm_basic | 0.133 | 0.116 | 13119 | 1.072 |
| lm_cost | 0.202 | 0.21 | 11732 | 1.015 |
| lm_adi | 0.202 | 0.236 | 11343 | 0.961 |
| lm_sdi | 0.202 | 0.21 | 11734 | 1.015 |
| rp_cp01 | 0.178 | 0.218 | 11612 | 0.939 |
| rp_cp001 | 0.14 | 0.213 | 11685 | 0.992 |
| enet_min | 0.205 | 0.248 | 11165 | 0.937 |
| enet_lse | 0.178 | 0.179 | 12181 | 0.964 |
| enet_pos_min | 0.207 | 0.235 | 11349 | 0.965 |
| enet_pos_lse | 0.178 | 0.179 | 12181 | 0.964 |
| rf_max16 | 0.195 | 0.226 | 11488 | 0.954 |
| rf_max32 | 0.194 | 0.242 | 11259 | 0.953 |
| rf_max64 | 0.201 | 0.243 | 11240 | 0.954 |
| xgb_n200 | 0.175 | 0.249 | 11147 | 0.962 |
| xgb_n100 | 0.188 | 0.252 | 11107 | 0.962 |

Correspondence to: Yubin Park, Department of Medicine, Apollo Medical Holdings, Alhambra, California, United States of America, E-mail: ypark@apolloed.net

Received: 28-Apr-2023, Manuscript No. JCRB-23-21165; **Editor assigned:** 01-May-2023, Pre QC No. JCRB-23-21165 (PQ); **Reviewed:** 15-May-2023, QC No. JCRB-23-21165; **Revised:** 22-May-2023, Manuscript No. JCRB-23-21165 (R); **Published:** 30-May-2023, DOI: 10.35248/2155-9627.23.14.461

Citation: Park Y, Buchan K, Piccone J, Sim B (2023) A Data-driven Approach to Revamp the ACO Risk Adjustment Model. J Clin Res Bioeth. 14:461.

Copyright: © 2023 Park Y, et al. This is an open access article distributed under the terms of the Creative Commons Attribution License, which permits unrestricted use, distribution, and reproduction in any medium, provided the original author and source are credited.

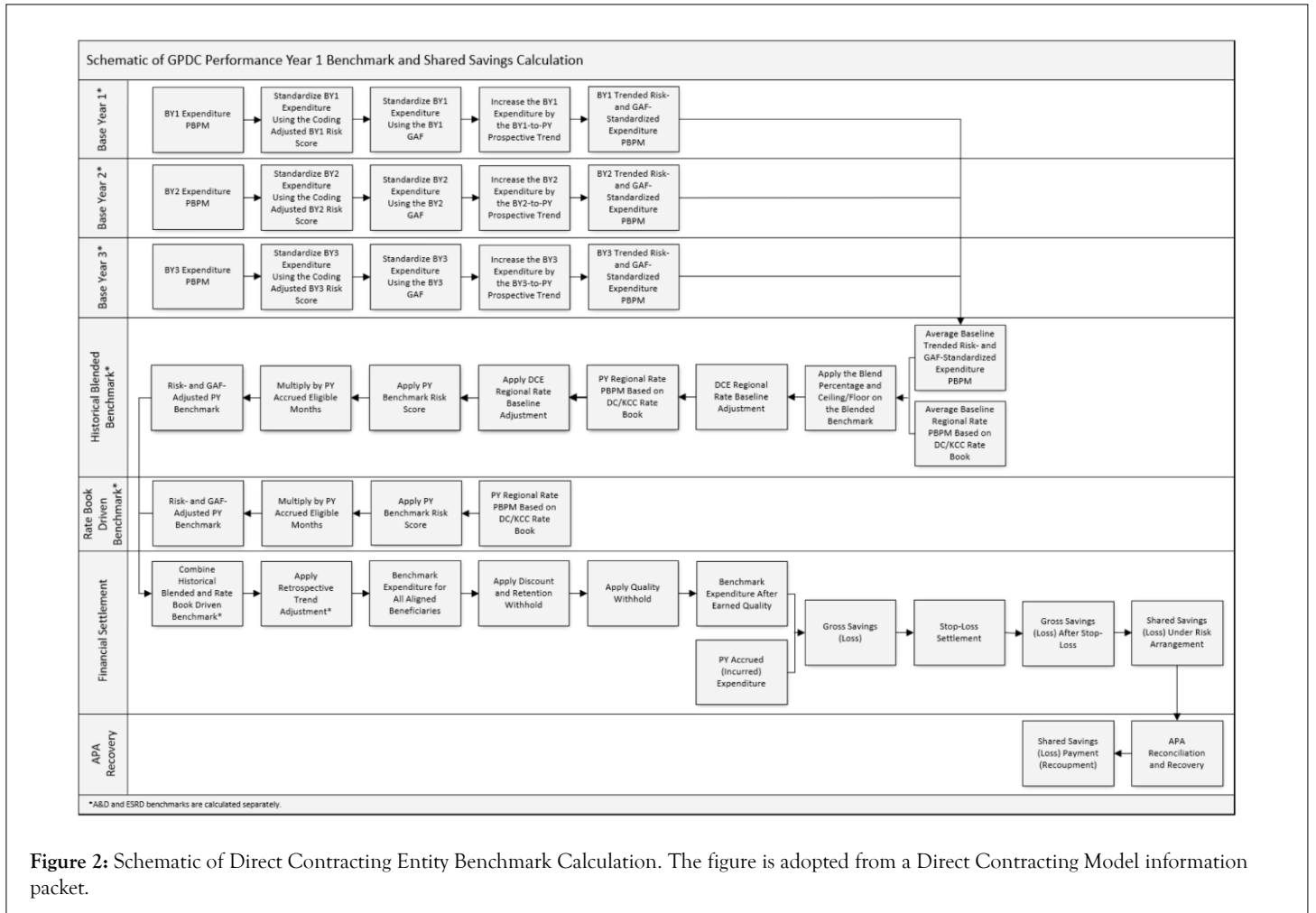


Figure 2: Schematic of Direct Contracting Entity Benchmark Calculation. The figure is adopted from a Direct Contracting Model information packet.